

***SALISBURY GROUP
OF ARTISTS
NEWSLETTER
October 2022***



Karen Welsh -Winter Walk

Making art to enhance life

INSIDE

Details of Hospital Exhibition Opportunity and we chat with SGA Artist Karen Welsh about her Exhibition in Gallery 4.

AND much more

Notes from the Editor

This newsletter includes the opportunity to exhibit in the SGA Exhibition at the hospital from November into the New Year. See below for details as to how to apply. Also have a look at the SGA Website and find out how to get one of your pictures into the Members Gallery.

The last month or more has seen my wife and I visiting Salisbury Hospital whilst she undertakes some treatment. The help and care there has been terrific, for which we are most grateful. Indeed the consultant we have seen has declared all will be fixed.

While we walked the corridors between different departments I was struck by the many artworks that are on display thanks to ArtCare. Each year I enter for the Exhibitions there and indeed know from the various sales that are transacted that people do not just walk by, They stop, they look and hopefully the colour, the image and the subject matter invokes pleasure and joy.

ArtCare is the arts in health service at Salisbury NHS Foundation Trust. Arts in health is widely recognised as a valuable asset to the quality of care provided in hospitals and healthcare settings. ArtCare aims to inspire creativity and innovation in healthcare by delivering a quality arts programme. In all its activities, ArtCare is looking to reinforce the link between the arts and healthcare and to raise awareness of the importance of a creative hospital environment to patient and staff wellbeing.

The last paragraph comes as a direct quote from the Artcare Website. Indeed, it is worth a look at their website to understand more of what they do.

Do not forget – Please contact me if you want to include any of your artist related news in the newsletter.

Happy painting !!!!

Terry

newletter@salisburygroupofartists.com

SALISBURY GROUP OF ARTISTS EXHIBITION AT THE SALISBURY DISTRICT HOSPITAL

THURS 24 NOV - FRI 6 JAN

The last opportunity for exhibiting with the SGA takes place shortly at the District Hospital. Always a really good venue with excellent footfall. It could prove to be an especially good one if you choose works which might appeal as seasonal presents.

Below are the guidelines for submission. Please take note of the points about sturdy frames and proper hanging fixtures i.e. D-rings and cord, not wire.

You can submit up to three pieces which you will need to deliver to the Facilities building at the Hospital

Date for submission are:

Tuesday 22nd November 10-3pm

You will also need to enclose an application form, listing titles, media and prices of your works. This form can be obtained from Laura Bell by emailing her at:

laura67bell@gmail.com

She will also try to answer any queries you have about the exhibition.

EXHIBITION GUIDELINES

1. Drop off/ collection point: **ArtCare office, Facilities Directorate, SDH South** (use Entrance B see map attached). Main reception staff cannot deal with deliveries.

2.

Pictures must be presented for hanging; properly framed (clip frames are not acceptable) Frame fixtures must be D rings with a taut cord , Not wire, – fixed in the top third of the frame. This is crucial to get right because picture frames can be damaged from badly attached fittings and the exhibition hanging system will not display your work to its full potential.

3. Please check dimensions with Exhibitions Organiser if pictures exceed 1.2m x 1m including frame.
4. Pictures are to be clearly labelled on the back with the artist's name, title and price.
5. Pictures must be unwrapped on delivery and wrapping taken away by the artist. We are unable to store bubble wrap etc. during exhibition.
6. The Exhibition Organiser reserves the right not to display all works delivered by the artist.
7. A commission of 30% inc VAT will be taken on all sales. This is donated towards the Hospital Arts Service and is used for buying or commissioning further works of art.
8. The Exhibition Organiser handles sales of exhibits and BACS payment to artists will be issued when payment by buyers has been completed.

9. Salisbury NHS Foundation Trust cannot be responsible for loss, theft or damage to exhibited works of art. The hanging system has security clips but artists must make their own insurance arrangements.
10. The Exhibitions Organiser must be notified a minimum of six weeks prior to the start of the exhibition if the artist can no longer participate.
11. Works that contain noxious or toxic substances or have flammability below 50c cannot be displayed.

Check list for handing in:



Printed list of artwork that details each:

- title
- price (inc our commission)
- Media



Pictures ready for hanging; d rings etc (see number 2 above for details)



Labelled on back inc:

- title
- price (inc our commission)
- artist name
- Media

Directions for drop off point:

- From the Odstock Road
- TURN in ENTRANCE B
- Drive straight for about 250yds
- Just before 2nd Zebra crossing pull up on yellow hatched area on right hand side
- ArtCare office is in Block 29 (entrance on 2nd Zebra

Your SGA Website new online Gallery needs a sample of your work!



We are delighted that over the last two months our SGA website has been updated by Ian Southwell of IJSwebsites. We welcome Ian, also a photographer and artist, and his wife Helen, a glass artist, as new members of SGA.

To update our online gallery we would like you to send in an image of a piece of your work to represent you in the Gallery.

Instructions for the Gallery from Ian;

- Photograph the picture/item you want to send to the Gallery and send it by email to
- gallery@salisburygroupofartists.co.uk
- **Do not forget to give us your name and the title of the picture too**
- It's fine to take your picture on a mobile phone or camera
- It needs to be medium or high quality. If unsure, send it anyway and if it's not suitable I will get back to you
- It doesn't matter if it's landscape, portrait or square
- We will crop your picture and it will look fabulous
- If you have any problems, drop us a line at the above gallery email

October Workshop update

from Annie George.

Saturday October 22nd workshop was with our own Fiona Forbes ;

Ten happy artists worked on colourful impasto winter scenes for their Christmas cards with Fiona Forbes last Saturday. A great time was had by all and some lovely designs were produced. We also enjoyed being accompanied by Fiona's eclectic playlist, which helped the creative flow!



In April 2023 Fiona Forbes has have been invited to tutor a course at the prestigious DEDHAM HALL , which is on the Essex / Suffolk border near Colchester, in beautiful countryside near Flatford Mill.



Dates are Saturday 22nd - Saturday 29th

A brief description of the course;

" Outdoor sketching with watercolours , creating loose, vibrant and impressionistic paintings using a painting knife and water based oils inside the studio.

Working outdoors (weather permitting) with watercolours and photos inspired by the beautiful surroundings of Dedham Hall, you will then paint inside the studio with water based oil paints, using vibrant colour mixes.

This course will be an aid to loosening up your style with quick "plein air" watercolour paintings and then creating paintings indoors using textural and impasto effects with oils and a painting knife.

My focus is on individual development and confidence building at your own pace and is for all levels."

Much more information and brochure available from:

sarton@dedhamhall.co.uk

01206 323027

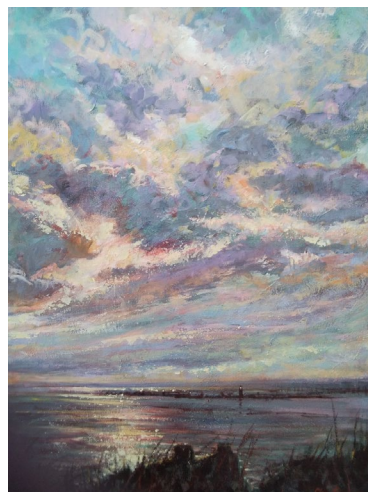
www.dedhamhall.co.uk

www.fionajforbesart.com

Coming Workshops

Saturday November 26th with Winchester artist Clare Goodman.

Suitable for acrylic and oil painters her topic will be, **'Bringing light into your land and seascapes'**.



There are 3 places left on Clare's workshop.

www.claregoodmanartist.co.uk

A Christmas date for your diary;

Saturday December 10th 2pm- The SGA Christmas Get together;

Glass artist Geraldine McLoughlin will give an illustrated talk on 'The Art of Glass'.



Geraldine's talk will range from a brief history of glass, through the glass revival of 1950's, types of glass, artist examples, leaded glass, fusing and casting, glass blowing and cold working with examples to illustrate.

Come along to this fascinating talk, followed by mince pies and a choice of hot beverages!

www.geraldinemcloughlin.glass

Watch this Space! The first four of next years' workshops will be announced in the November newsletter, so keep watching the workshop pages!

To book any of the workshops please contact Annie George; annie.george2308@gmail.com

Cost £30 per workshop for members, £40 for guests. All workshops on Saturdays, 10am-4pm, at Bemerton Methodist Hall, Roman Road, Salisbury, SP2 9BH.

To pay by BACs;

Acc. name; Salisbury Group of Artists

Sort code; 30 97 41

Acc.no; 03627988

Ref; workshops

SALISBURY SKETCHERS

From Loraine Sherlock

Visit to The Moot at Downton, Sunday, October 16th.

This was our last outdoor sketching event for this year, and I would like to thank all those members who have come along throughout the year to support this group, including Jo who joined us for the first time and who produced two delightful sketches during the afternoon.

We were lucky to enjoy dry weather with the rain holding off until the end of our session. We all chose different locations to sketch and came together before we left to look at each other's work. It is always good to see the different ways in which members work and the variety of methods used.

We are due to visit Salisbury Museum on the afternoon of November 13th to view the current Watercolour exhibition by Andrew Lucas entitled 'The Timeless City - Salisbury through Watercolour'. We have permission to sketch some of the artefacts there, so it should be an interesting afternoon.

If you would like more information about Salisbury Sketchers, please do get in touch.

Loraine 07496894568

Email: paperstitch@icloud.com



Chatting to Karen Welsh

Karen has an exhibition in Gallery 4 within Salisbury Library. Within the Gallery she is joined by Jane Walker and Felicity Jowitt presenting colours, images and works that are particularly unique. It is a stunning exhibition well worth a visit.



I asked her to tell us a little of her artistic journey and story.

Who would have thought that her career in the arts was established when she was eighteen joining her father in his sign-painting business in Surrey. Producing bespoke signs and pictorial art in the traditional way allowed her to be creative every day.

But it was not always work. She said they had days when her father would drive them into the countryside to spend a few hours painting. This is where her love for the landscape began.

After completing her apprenticeship in 1982 she started my own signwriting company until 2008 when she became a full-time artist.

It is obvious that the skills and experience she acquired for business have very much contributed to the way she works in her painting business today.

I asked what her inspiration was. She said, 'My move to Wiltshire 11 years ago has transformed my way of seeing the landscape. The openness with big skies and never-ending vistas has led me into my semi abstracted way of painting and the joy of other vast spaces in our British landscapes.'

My paintings are made in the studio, whilst listening to 'You Tube' videos inspiring me and sharing my space. They come together using the suggestion of a place then developed using colour, form and balance to create my abstracted works usually with an element of travel with a connection between the land or sea and sky. I hope to evoke ideas and memories of places and feelings inspiring conversation with its audience.

I love what I do and now enjoy sharing my knowledge with other people. I hold 'pay as you go' painting session using acrylics in the Methodist Church Hall, Roman Road, Salisbury.



The enjoyment of painting using your instinct is the aim, to be confident and to paint for yourself and not feel pressured. The group is made up of beginners and artists who sell their work.

I live to paint and try to every day. A brand-new canvas on the easel is like a new day.' www.karenwelshworkshops.co.uk

KAREN WELSH

EXHIBITION

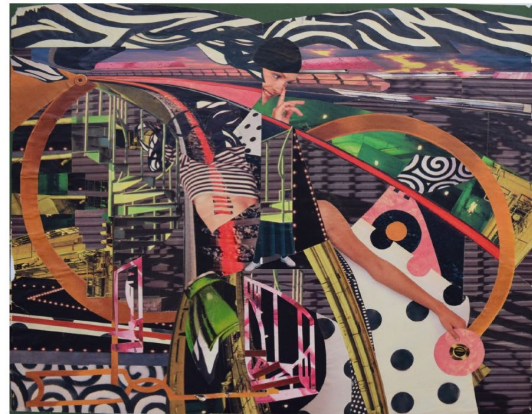
The Exhibition is on until the 29th October at Gallery 4 -

KAREN WELSH - The exhibition shows work created from 2019 – but mostly 2022. Most of the paintings are semi-abstracted landscapes with an element of travel within them, always looking forward, inspired by our wonderful landscape. All the work is original including the little mounted paintings.

JANE WALKER – Jane has always been interested in architecture. Her interest in painting scenes which mostly include buildings is mainly about how various kinds of light work to create a certain look, and atmosphere.

FELICITY JOWITT – In this project, the aim is to give perfectly good materials a second and alternative life. The material has been salvaged from donated but unsaleable denim garments and transformed into useable items. The pieces displayed range from unique wearable art garments to everyday domestic items.

AT THE ANTELOPE CAFE LAURA BELL




CUTTING EDGE ART & COLLAGE

30 SEPT - 30 NOVEMBER
MONDAY-SATURDAY 10-5 (CLOSED WED)

**THE ANTIQUE MARKET,
CATHERINE STREET, SALISBURY**

The current exhibition at The Antelope Café is a collection of original collages, prints of collages and watercolours in the style of collages all done by Laura Bell. This is a collection of fun, quirky and different pictures. All work is at affordable prices and would make an excellent seasonal present for someone with a taste for the unusual.

Belmont Fine Arts - established 2007 offering giclee and digital prints from business cards and greetings cards to 60inch wide canvas, A2 flatbed scanning and bespoke picture framing we are sure we will be able to help. We work with individual artists and photographers as well as commercial clients nationwide producing an excellent finish to showcase your work at its best. Visit us in our studio and barn just outside Salisbury to discuss your needs, choose mounts, mouldings and papers or just have a chat about how we can work with you. We are a friendly family run business with a growing customer base so drop us an email or give us a call and we look forward to hearing from you and working together soon. (We want to be able to give you our full attention so by appointment only please)



Life Drawing

Thursday mornings
10am - 12 noon

Morgans Vale & Woodfalls Village Hall
The Ridge, Redlynch SP5 2LD

Friendly, informal drawing group

New artists are always welcome, whether beginners or lifelong pros. With backgrounds in so many different media, everyone develops their skills, learning from one another however long they have been drawing.

If you are interested call Rhys on 07711 157188
or email rhysthomas54@outlook.com



Karen Welsh
ACRYLIC PAINTING WORKSHOPS

Sharing passion for painting

Join me in a 1-2-1 or group acrylic painting workshop.

Ideal if you want to learn to paint with acrylics or want to improve your skills.

Thursdays 9.30 - 12.30 (bi-weekly)
Methodist Church Hall, Bemerton,
Roman Road, Salisbury SP2 9BH

For dates, booking and more information
www.karenwelshworkshops.co.uk
07515 482406

FEES

ANNUAL MEMBERSHIP FEE £20 individual; £30 Family

WORKSHOPS £30 members (booking essential)

UNTUTORED LIFE CLASS £12 per session.

TALKS / SALISBURY SKETCHERS free.

FRIDAY ART £2 per session.

VISITS fees vary. See website/ newsletters

FRIDAY ART MEETINGS ARE HELD THROUGHOUT THE YEAR, EXCEPT AUGUST, AT METHODIST CHURCH HALL, ROMAN RD., BEMERTON, SALISBURY. SP2 9BH

FURTHER DETAILS OF ALL THESE EVENTS CAN BE FOUND ON OUR WEBSITE.

www.salisburygroupofartists.co.uk

CONTACTS

MINUTES SECRETARY JANE HANBIDGE

jane.hanbidge@icloud.com

FRIDAY ART Phone Josie and Ken Smith 01980846508)

MEMBERSHIP and EXHIBITIONS

MARTIN WEBSTER 07814 154572

martinwebster52@icloud.com

NEWSLETTER TERRY KEMP 01980 620256

newsletter@salisburygroupofartists.com

PUBLICITY BEVERLEY SINGLETON 07590

111881

beverleysingleton@rocketmail.com

TREASURER ROSE DULY 01722 321544

roseduly@outlook.com

WEBSITE TERRY KEMP 01980 620256

newsletter@salisburygroupofartistst.com

WORKSHOPS ANNIE GEORGE 01722 326596

artworkshops@salisburygroupofartists.com

